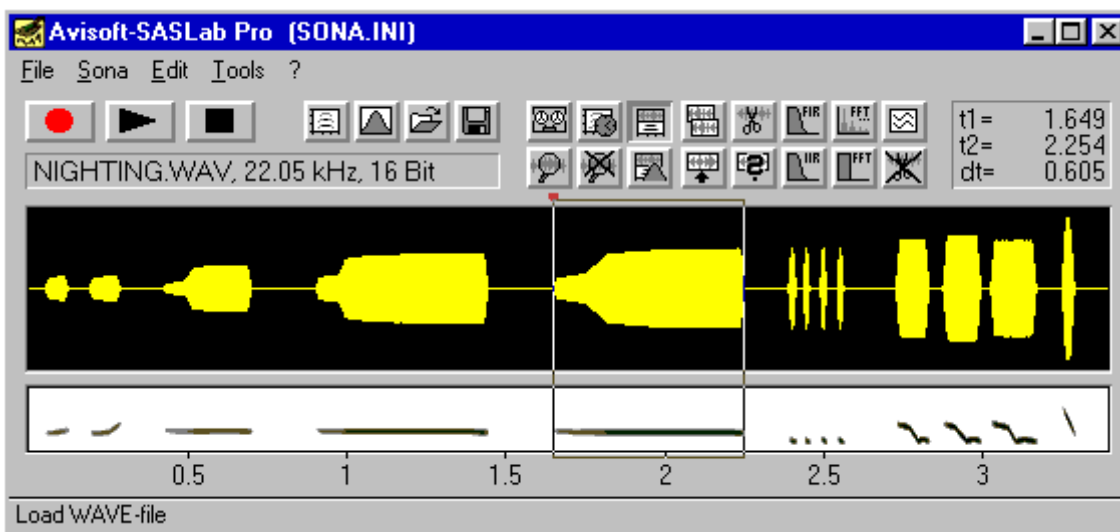


LAAR bioacoustic

Avisoft **SASLab Pro**

- Supports all sound cards compatible to Windows
- Full WINDOWS-integration including processing of WAV-files, spectrogram-export in BMP-,TIFF- or WMF-format and export of measured values taken from the spectrogram by clipboard, ASCII-file or DDE
- Import of soundfiles (ASCII, different binary formats, .AIF, .SND, .AU) which have been sampled with other sound processing tools.



Avisoft-SASLab Pro is comprehensive:

- 64- to 1024-points-FFT color coded spectrograms, high quality spectrogram output with TrueType fonts
- Real-time spectrogram display with circular buffer recording (This feature is unique to Avisoft in this price range!)
- Digital filtering for improving of sound files
- Flexible cursors for measuring of spectrogram structures
- Powerful automatic sound parameter measurement and classification facility
- Labeling facility for single point and time section labels
- Magnitude- and Powerspectrum, Auto- and Crosscorrelation, Cepstrum, Histogram, 2D and 3D Scatterplot, 3D Waterfall display, Impuls-Density-Histogram, Envelope and Instantaneous frequency using hilberttransformation, frequency-shift using FFT technique, Root mean square, Sound similarity matrix for comparison of spectrograms
- Synthesizer for generation of artificial songs and calls by mouse drawing of the parameter evolution (fundamental frequency, envelope, harmonics, frequency and amplitude modulation)
- Automatic harddisk recording for long term monitoring based on a frequency selective trigger
- Automatic Response option for automated playback experiments base on real-time classification and re-synthesis
- and much more ...

LAAR bioacoustic

Avisoft SASLab Pro

Avisoft-SASLab Pro is easy to use:

- The easy and intuitive operation of the Avisoft-SASLab is supported by an online help system.
- Context sensitive help messages reduce the need to consult the printed manual.
- **Avisoft-SASLab Pro is fast:**
- Spectrogram computation is very fast.
- The 2-channel real-time spectrograph runs at sampling rates up to 96 kHz.

System Requirements

- IBM-compatible PC, 486 or higher, > 25MHz
- At least 4MB of RAM, 16MB or more are recommended
- Free harddisk space: > 10MB VGA-Display with at least 256 colors (resolution of at least 800*600 is recommended)
- Soundcard compatible to Windows (MCI-driver required)
- Operating system: Microsoft-Windows 3.1x, Windows95, Windows98, Windows ME or WindowsNT/2000

