

LAAR bioacoustic

Vibrations/Contact Detectors

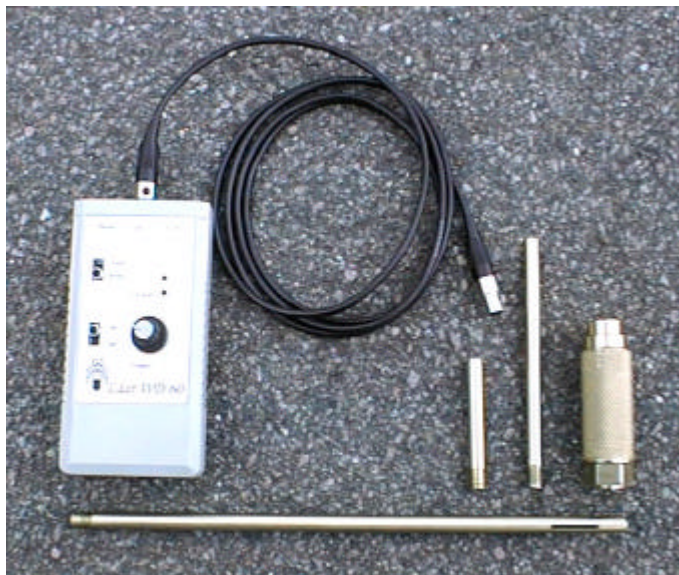
Laar WD 60 Pro CSC

High sensitive sensor and amplifying system for contact sound and vibration detection. With the line out output detected signals can be recorded on different recording medias. So you are able to make a documentation about activities. The signal processing and analysing can be done with a notebook computer or subnotebook. So, complex sound databases could be easy build up.

The new carrier sensor system allow multi task use. It supports the use of the system in different materials/ medias. The Laar WD 60 Pro CSC system contain the main device, the CSC carrier system, special probe useful in palms (for Red Palm Weevil and Fruit Stalk Borer detection).

Changeable insertion sensor; low noise audio amplifier; amplifying: 56dB/75dB; frequency range : 50 Hz to 30.000 Hz; outputs: headphones, line out; inputs: microphone in; low battery display; power supply: 9 V

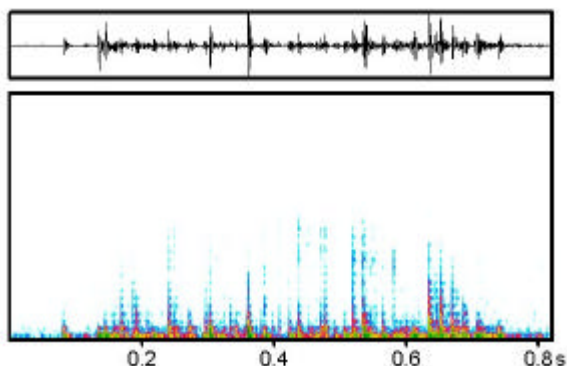
The Laar WD 60 Pro CSC is special balanced to the needs for insect detection in palms. A special software package is included with sound class differenciation and sample database. This package is very helpful by field evaluation of possible infestation.



Laar WD 60 Pro CSC

Special offers for complete packages and teaching programs for monitoring programs of beetles and weevils (especially RPW) for special tasks are possible!

Where can the Laar WD 60 Pro CSC systems be used?!!



Spectrogram:
Feeding sound of *Rhynchophorus ferrugineus*



The Laar WD 60 Pro CSC is a high sensitive bioacoustic detection system for vibration sound, produced from motion or eating activities of weevil or beetle and their larvae . The sensor unit is changable. The usable frequency range is from 50 Hz up to 30 kHz. Headphone output, line out and a low battery display with high accuracy are features of the WD 60 Pro CSC. The low battery display protect against fail measurement reasoned by lower amplifying power.

The system could be successful used until now by: *Rhynchophorus ferrugineus*, *Oryctes elegans*, *Jebuses hammerschmidt*.